

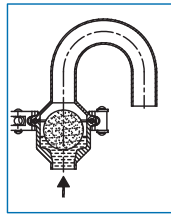


I Application

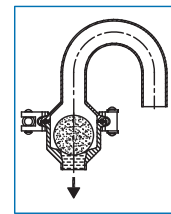
The vent valve is installed vertically on the suction side of a pump at the top of a tank or at the highest point of an installation in order to release the entrapped air. The valve remains open as long as there is an air flow, but closes as soon as the product reaches the valve to prevent the product from escaping.

I Operating principle

The density of the freely floating ball is less than the density of water, when the product reaches the valve, the ball floats on its surface. As the product rises, the air can escape till the ball is forced to close the valve.



As the liquid level rises, the ball floats allowing the air to escape till the ball is forced against the seat, thus, preventing the product from leaking.



At a pressure below atmospheric, the ball falls to the lower seat. * an air inlet should be provided to facilitate the process of emptying.

I Design and features

Easy assembly/disassembly - clamp design, no tools required.
Standard connection: welding.

I Materials

Parts in contact with the product	AISI316L
Other parts (no contact with the product)	AISI304
Clamp gasket	EPDM
Ball	Natural Rubber
Valve surface finish	Mirror polish



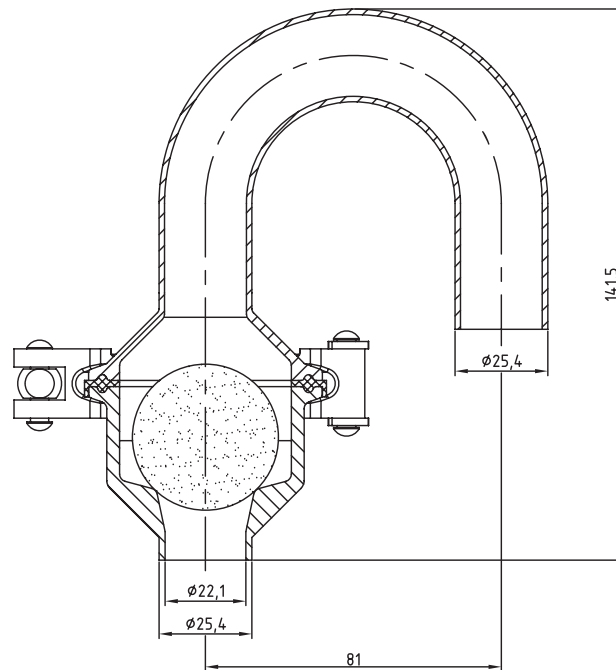
I Options

Available connections: Clamp, SMS, DIN, etc.
Optional adjustment for tank emptying.

I Technical specifications

Max. pressure 10 bar
Max. temperature 90°C (NR)
Standard valve DN-1"

Low liquid flow speed at the valve inlet is advised for a better positioning of the ball.



The information contained in this brochure is for guidance only. We reserve the right to modify any material or feature without notice in advance. For further information, please, consult our web site.

www.inoxpa.com



FLVDA.1.EN-1207